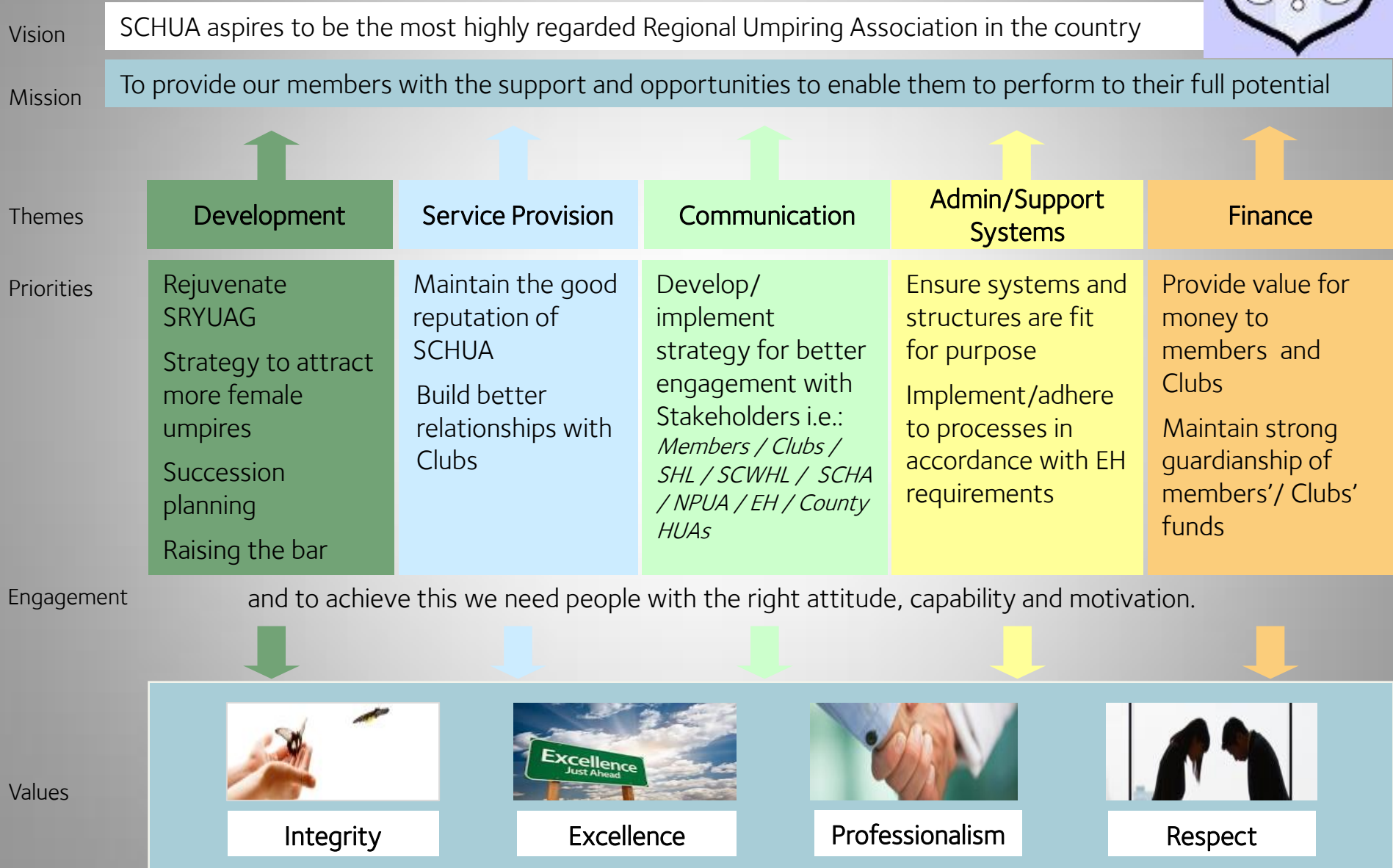


SCHUA Strategy and Priorities 2015/16



Development

- Use of technology
- Fitness policy
- Support umpires on NPDP
- Review coaching feedback form
- Allocate group of umpires per coach
- Arrange Coaching Day
- Support Coach candidates
- Participate in EH Working Group re female umpires

Service Provision

- Achieve consistency in interpretation of new rules
- Club Feedback system
- London League appointments
- Trial provision of Match Officials for recording/timing card in Women's League

Communication

- Induction process for new members
- Induction process for new Clubs
- Use of Social Media
- Newsletters/bulletins
- Identify most appropriate channels

Admin/Support systems

- Review structure and content of web-site
- Implement new Constitution
- On-line voting system
- Consolidate NPDP process
- Adopt new L2 assessment process (for umpires & coaches)
- Re-write Job Descriptions for Committee roles



Finance

- New, better quality shirts for 2016/17
- Continued investment in technology to support umpires and coaches
- Possible sponsorship
- Reduction/equalisation of Club Fees