



SCHUA

Report to members 2014 - 2015

Review of Activities 14/15

- What was new?
- Development Activity
- Achievements
- Leagues
- Admin and Finance
- Committee movements



What was new?

- NPDP implemented (National Programme Development Panel)
- Radios for all active umpires
- 2 new Officers!



Development Activity



- Assessed all umpires (>3 appointments)
- Coached all umpires at least once
- All 4 NDPD umpires were successful in achieving Level 3 / NPUA status
- 3 Indoor umpires promoted to NPUA
- 3 new Level 2 umpire coaches
- 9 new Grade 1 umpires
- 9 new Grade 2 umpires
- Development Groups at the EHL Play-Offs
- Panels reviewed leading to a number of promotions
- SRYUAG – 2 nominations to National Panel

Development – Challenges

- Lack of Women's Umpires
- SRYUAG :
 - Reduced activity/less support for young umpire programme
 - Fixture clashes
 - New processes (EH)
- Communication
 - Engaging with our stakeholders





Achievements

- SCHUA members continue to achieve success at national and international level as Umpires, Umpire Managers and Technical Officials, including:
 - Frances Block
 - Louise Knipe
 - Dawn Bonner
 - Rachel Williams
 - Karen Daffey
 - Tex Lane
 - Sean Edwards
- Steve Godwin – EH Club Umpire of the Year + Winner of the Community Sports Official of the Year (Sports Officials UK)

League and appointments

- 1094 outdoor umpire appointments made – mostly to League matches
- 60 Indoor appointments
- Good relationships maintained with both Leagues
- Both contributed to cost of radios
- SCHUA represented on League Committees by Kevin Burge and James O'Hara
- Hospitality Awards - Trojans HC (Men)
 - Staines HC (Ladies)
- Hospitality and match feedback reports available





League update

- Sevenoaks Men + Hampstead & Westminster Ladies promoted to EHL Conference
- Horsham Ladies relegated from EHL to SCWHL
- Banbury and Henley Men + Surbiton Ladies' 2 promoted to Premier 1
- Purley Men + Teddington Ladies relegated to Premier 2
- We welcome Winchester, Holcombe 1A, Woking and Oxford Hawks Men's 2 + Banbury and Wimbledon 1A Ladies to Premier 2
- We said goodbye to Barnes, Ashford and Tunbridge Wells Men + Eastcote and Henley Ladies, all relegated from South Prem 2.



Admin and Finance

- Drafted new Constitution and Code of Conduct
- Drafted Communications Strategy
- Working on new Job Descriptions for Committee roles
- Hosted County HUA Meeting with EH in November 14 to discuss new Level 1 process
- Ongoing update/review of forms and materials on web-site
- Reduced the cost of purchasing new shirts
- Full financial report available separately



Committee movements

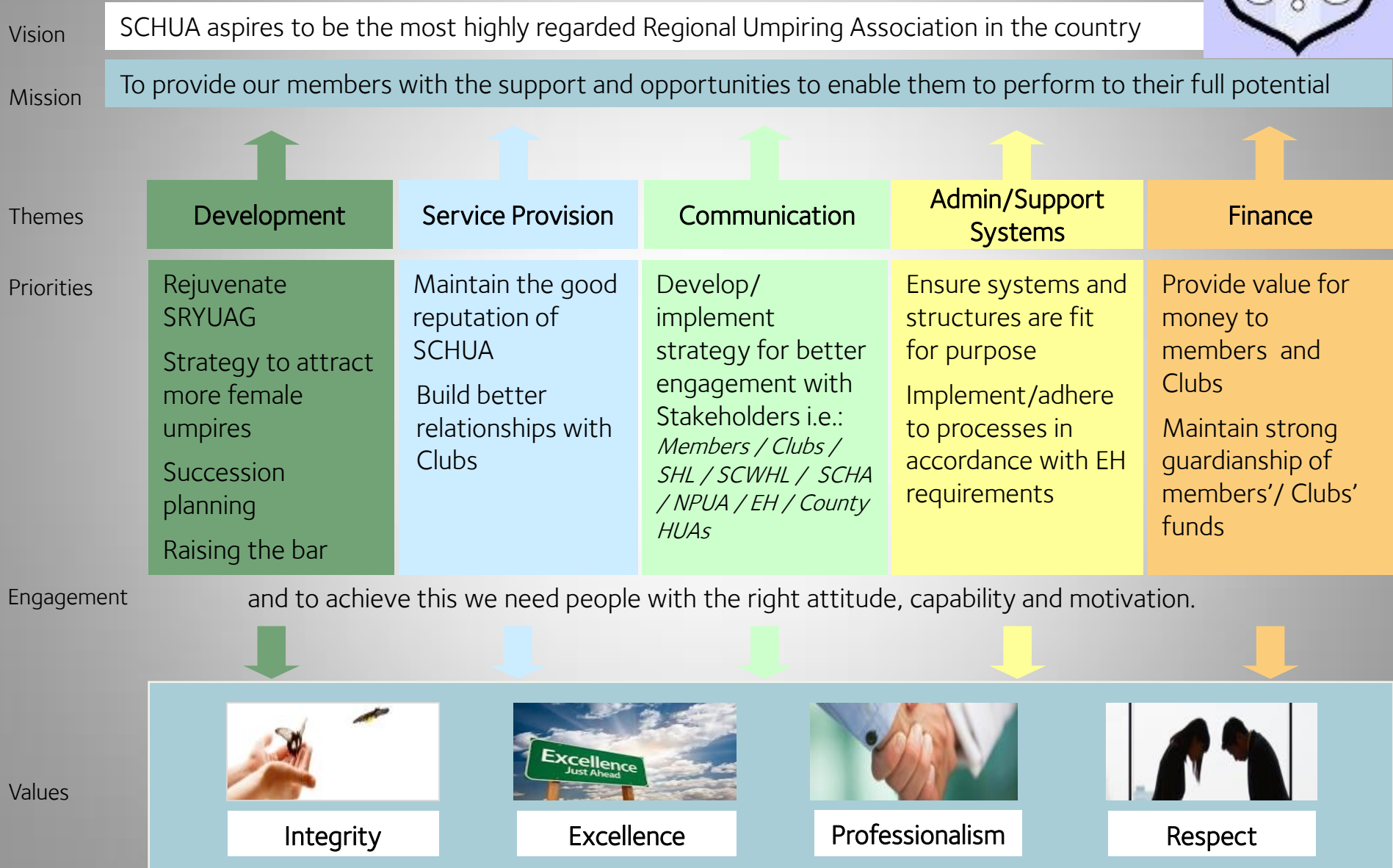
- We say goodbye and thank you to:
 - Ruth Busse as Secretary (after 4 years)
 - Daran Cass as Vice President
 - Mark Everard as Indoor Chair of Selectors
 - Lynn Sparrow as Chair of SRYUAG
 - Lia Waine as non-portfolio member (to Chair of Indoor Selectors)

Awards



- Mason Award (Merit or progress)
- Tony White Award (up and coming)
- Gill Linnell Award (Services to South Umpiring)
- Jon Nickerson Award (Coach of the Year)
- Young Umpire of the Year
- Life VP - Richard Wood
- Life Members - Jim Patel and Gordon Wiseman
- Steve Woodward Award (Men's Club) – Trojans
- Sheila Plant Award (Ladies' Club) - Staines

SCHUA Strategy and Priorities 2015/16



Development

- Use of technology
- Fitness policy
- Support umpires on NPDP
- Review coaching feedback form
- Allocate group of umpires per coach
- Arrange Coaching Day
- Support Coach candidates
- Participate in EH Working Group re female umpires

Service Provision

- Achieve consistency in interpretation of new rules
- Club Feedback system
- London League appointments
- Trial provision of Match Officials for recording/timing card in Women's League

Communication

- Induction process for new members
- Induction process for new Clubs
- Use of Social Media
- Newsletters/bulletins
- Identify most appropriate channels

Admin/Support systems

- Review structure and content of web-site
- Implement new Constitution
- On-line voting system
- Consolidate NPDP process
- Adopt new L2 assessment process (for umpires & coaches)
- Re-write Job Descriptions for Committee roles



Finance

- New, better quality shirts for 2016/17
- Continued investment in technology to support umpires and coaches
- Possible sponsorship
- Reduction/equalisation of Club Fees



Committee 15/16

- New Chair of SRYUAG – Julie Ferrett
- New Chair of Indoor Selection – Lia Waine
- Kevin Burge continues as Chair of Outdoor Selectors
- Karen Daffey as Rep to EH (for 1 more season)
- Ruth Busse as Rep to SCHA
- New Vice President (Deputy Chairman)
- New non-portfolio member(s) – to replace Lia

Any questions?

